

CERTIFICATE OF LOCATION OF GOVERNMENT CORNER

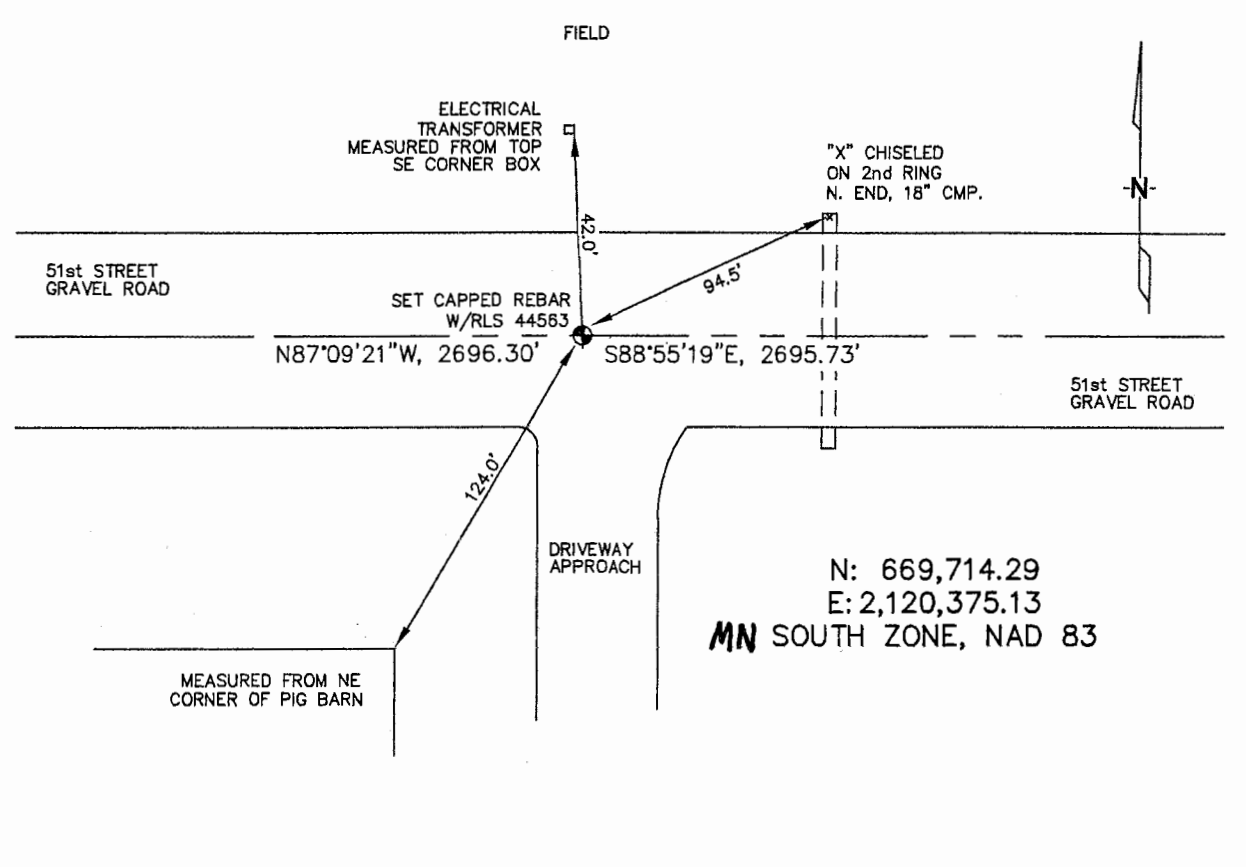
SOUTH 1/4 Corner of Section 5, Township 105N, Range 42W, 5TH P.M.

STATE OF MINNESOTA, County of MURRAY

At the corner location shown on the sketch :

- On _____ found _____
- left monument as found, lowered monument, removed monument (explain)
- On 4/11/2006 set 5/8" REBAR WITH CAP: RLS 44563.

Sketch of reference ties



N: 669,714.29
E: 2,120,375.13
MN SOUTH ZONE, NAD 83

Statement of evidence relative to this corner location is on back page

I hereby certify that this document and the data contained herein was prepared by me or under my direct supervision.

Thomas V. Zeff 5/04/06
 Thomas V. Zeff Date

Registration No. 44563

Land Surveyor, Professional Engineer

County Surveyor, County Engineer

OFFICE OF THE COUNTY RECORDER
 County of _____

SEP 28 2006

I hereby certify that this document was filed in the Co. Recorders office at _____ .M. on the day of _____ A.D. , 20

County Recorder James V. Johnson
 By _____, Deputy

DOCUMENT NO. _____

STATEMENT OF EVIDENCE:

SOUTH 1/4 CORNER, SECTION 5, T. 105 N., R. 42 W.,
MURRAY COUNTY, MINNESOTA

- 1861 D.W. Wellman & S.S. Smoot, US. Deputy Surveyors, monumented corner, as per instructions.
- 4/11/2006 Ulteig Engineers, Inc., Survey Crew, Brian Payne Party Chief, found nothing. Set a 5/8" rebar with cap: RLS 44563.
Ties: NW-42.0' to top, SE corner of electrical transformer box;
NE-94.5' to chiseled "X" on top of 2nd ring, N end, 18" C.M.P.;
SW-124.0' to NE corner of pig barn;
E-2695.73' to SE corner, Section 5;
W-2696.30' to SW corner, Section 5.